

Cermak Rd and Mannheim Rd

<Southbound>

RLR Crash Data and Analysis

In 2008 The Village of Westchester received approval from the Illinois Department of Transportation (IDOT) to install Red Light Running (RLR) cameras on the southbound approach of the intersection of Cermak Rd and Mannheim Rd. The original RLR camera system manufacturer contracted by the Village of Westchester was Redspeed USA Corp. (Redspeed). Redspeed was under contract with the Village of Westchester until June of 2013, at which time all of Redspeed's equipment was removed from the intersection and their contract with the Village of Westchester was terminated.

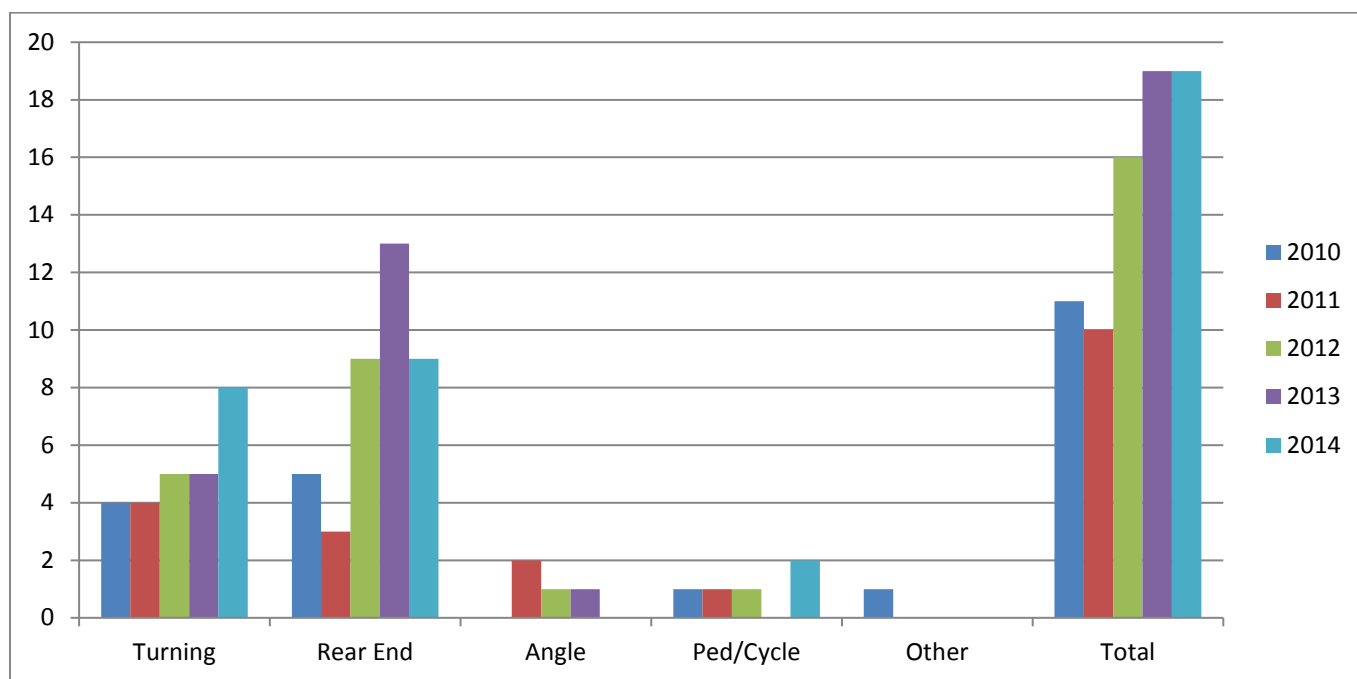
- Date at which the SafeSpeed cameras went live on the southbound approach: **11/09/2013**

RedSpeed USA Corp. can be reached at:
400 Eisenhower Lane North
Lombard, Illinois, 60148
(630)-317-5720
www.redspeed-usa.com

No changes were made to the traffic signal timing or any other settings pertaining to operation of traffic signals at this intersection following the camera installation and vendor transfer.

The table and chart below show a summary of motor vehicle crashes at the intersection of Cermak Rd and Mannheim Rd over a span of 5 years. The data from 2010 to 2012 show the period prior to the transfer of RLR vendors. The data from 2013 show the year in which the vendor transfer occurred. The data from 2014 show the year following the vendor transfer.

	Turning	Rear End	Angle	Pedestrian/Cyclist	Other	Total
2010	4	5	0	1	1	11
2011	4	3	2	1	0	10
2012	5	9	1	1	0	16
2013	5	13	1	0	0	19
2014	8	9	0	2	0	19



In 2009/2010 the Average Daily Traffic (ADT) volume along Cermak Rd reached 34,700 to 42,400 cars at the intersection of Cermak Rd and Mannheim Rd. The ADT along Mannheim Rd reached 22,400 to 26,000 cars, according to IDOT.

By 2013/2014 there was a decrease in ADT along Cermak Rd (26,600 to 32,700). There was also a decrease in ADT along Mannheim Rd at the same location (23,600 to 28,600). (See Tab 3)

At the intersection of Cermak Rd and Mannheim Rd there were 11 accidents in 2010, 10 in 2011, 16 in 2012, 19 in 2013 and 19 in 2014.

Collision Diagram

1/1/2014 to 12/31/2014

Crash Route: US012 | From MileStation 57 to 57 | County : Cook | Intersection Related: Intersections | *See Notes at End of Report.

Date	Weather	Roadway	A	Injuries B	C	Killed	Type of Crash	Light Condition	Mile	Vehicle Type	DIRP	Maneuver	Event 1	Loc 1	Event 2	Loc 2	Event 3	Loc 3	Unit
201400152576																			
1/20/2014 9:15 PM	Snow	Snow or Slush	0	0	0	0	Turning	Darkness	57.00	Passenger	North	Turning Right	Motor Vehicle In Traffic	Intersection	(UNK)	(UNK)	(UNK)	(UNK)	1
										Passenger	West	Straight Ahead	Motor Vehicle In Traffic	Intersection	(UNK)	(UNK)	(UNK)	(UNK)	2
201400153468																			
1/22/2014 3:10 PM	Snow	Snow or Slush	0	0	0	0	Rear End	Daylight	57.00	Passenger	West	Slow/Stop In Traffic	Motor Vehicle In Traffic	Intersection	(UNK)	(UNK)	(UNK)	(UNK)	1
										Pickup	West	Slow/Stop In Traffic	Motor Vehicle In Traffic	Intersection	(UNK)	(UNK)	(UNK)	(UNK)	2
201400091622																			
1/29/2014 9:00 AM	Other	Unknown	0	0	0	0	Rear End	Daylight	57.00	Passenger	North	Straight Ahead	Motor Vehicle In Traffic	On Pavement (Roadway)	(UNK)	(UNK)	(UNK)	(UNK)	1
										Passenger	North	Slow/Stop In Traffic	Motor Vehicle In Traffic	On Pavement (Roadway)	(UNK)	(UNK)	(UNK)	(UNK)	2
201400161637																			
2/7/2014 8:48 PM	Clear	Dry	0	0	0	0	Rear End	Darkness	57.00	Passenger	West	Straight Ahead	Motor Vehicle In Traffic	On Pavement (Roadway)	(UNK)	(UNK)	(UNK)	(UNK)	3
										Passenger	West	Straight Ahead	Motor Vehicle In Traffic	On Pavement (Roadway)	(UNK)	(UNK)	(UNK)	(UNK)	1
										Passenger	West	Straight Ahead	Motor Vehicle In Traffic	On Pavement (Roadway)	Motor Vehicle In Traffic	On Pavement (Roadway)	(UNK)	(UNK)	2
201400168139																			
2/23/2014 6:00 PM	Clear	Dry	0	2	0	0	Turning	Daylight	57.00	Van/Mini-Van	North	Straight Ahead	Motor Vehicle In Traffic	On Pavement (Roadway)	(UNK)	(UNK)	(UNK)	(UNK)	1
										Van/Mini-Van	East	Turning Left	Motor Vehicle In Traffic	On Pavement (Roadway)	(UNK)	(UNK)	(UNK)	(UNK)	2

Collision Diagram

1/1/2014 to 12/31/2014

Crash Route: US012 | From MileStation 57 to 57 | County : Cook | Intersection Related: Intersections | *See Notes at End of Report.

Date	Weather	Roadway	----- A	Injuries B	----- C	Killed	Type of Crash	Light Condition	Mile	Vehicle Type	DIRP	Maneuver	Event 1	Loc 1	Event 2	Loc 2	Event 3	Loc 3	Unit
201400171282																			
3/5/2014 2:16 PM	Clear	Dry	0	0	0	0	Rear End	Daylight	57.00	Passenger	East	Slow/Stop In Traffic	Motor Vehicle In Traffic	Intersection	(UNK)	(UNK)	(UNK)	(UNK)	1
										SUV	Unknown	Unknown	Motor Vehicle In Traffic	Intersection	(UNK)	(UNK)	(UNK)	(UNK)	2
201400214862																			
4/15/2014 5:57 PM	Rain	Wet	0	0	1	0	Turning	Daylight	57.00	Passenger	North	Turning Right	Motor Vehicle In Traffic	On Pavement (Roadway)	(UNK)	(UNK)	(UNK)	(UNK)	1
										Passenger	West	Turning Right	Motor Vehicle In Traffic	On Pavement (Roadway)	(UNK)	(UNK)	(UNK)	(UNK)	2
201400049174																			
5/12/2014 6:15 AM	Clear	Dry	0	0	0	0	Turning	Dawn	57.00	Motorcycle (Over 150cc)	North	Turning Right	Motor Vehicle In Traffic	On Pavement (Roadway)	(UNK)	(UNK)	(UNK)	(UNK)	1
										Passenger	South	Slow/Stop - Left Turn	Motor Vehicle In Traffic	On Pavement (Roadway)	(UNK)	(UNK)	(UNK)	(UNK)	2
201400052182																			
5/18/2014 6:24 AM	Clear	Dry	0	0	0	0	Rear End	Dawn	57.00	Passenger	East	Straight Ahead	Motor Vehicle In Traffic	On Pavement (Roadway)	(UNK)	(UNK)	(UNK)	(UNK)	1
										Passenger	East	Slow/Stop In Traffic	Motor Vehicle In Traffic	On Pavement (Roadway)	(UNK)	(UNK)	(UNK)	(UNK)	2
201400363736																			
7/7/2014 2:45 AM	Clear	Dry	0	0	0	0	Turning	Daylight	57.00	Passenger	Northeast	Turning Right	Motor Vehicle In Traffic	Intersection	(UNK)	(UNK)	(UNK)	(UNK)	1
										Passenger	Northeast	Turning Right	Motor Vehicle In Traffic	Intersection	(UNK)	(UNK)	(UNK)	(UNK)	2
201400111458																			
7/15/2014 4:46 PM	Clear	Dry	0	1	0	0	Pedalcyclist	Daylight	57.00	Passenger	Northeast	Turning Right	Pedalcyclist	On Pavement (Roadway)	(UNK)	(UNK)	(UNK)	(UNK)	1

Collision Diagram

1/1/2014 to 12/31/2014

Crash Route: US012 | From MileStation 57 to 57 | County : Cook | Intersection Related: Intersections | *See Notes at End of Report.

Date	Weather	Roadway	A	Injuries B	C	Killed	Type of Crash	Light Condition	Mile	Vehicle Type	DIRP	Maneuver	Event 1	Loc 1	Event 2	Loc 2	Event 3	Loc 3	Unit
201400191429																			
8/22/2014 11:05 AM	Cloudy/Overcast	Dry	0	0	0	0	Rear End	Darkness/ Lighted Road	57.00	Passenger	East	Straight Ahead	Motor Vehicle In Traffic	On Pavement (Roadway)	(UNK)	(UNK)	(UNK)	(UNK)	1
										Passenger	East	Slow/Stop In Traffic	Motor Vehicle In Traffic	On Pavement (Roadway)	(UNK)	(UNK)	(UNK)	(UNK)	2
201400223544																			
8/27/2014 2:45 PM	Clear	Dry	0	0	0	0	Rear End	Daylight	57.00	Passenger	East	Starting In Traffic	Motor Vehicle In Traffic	On Pavement (Roadway)	(UNK)	(UNK)	(UNK)	(UNK)	1
										SUV	East	Slow/Stop In Traffic	Motor Vehicle In Traffic	(UNK)	(UNK)	(UNK)	(UNK)	(UNK)	2
201400242934																			
9/2/2014 6:44 PM	Clear	Dry	0	0	0	0	Rear End	Daylight	57.00	Passenger	West	Slow/Stop In Traffic	Motor Vehicle In Traffic	Intersection	(UNK)	(UNK)	(UNK)	(UNK)	1
										Passenger	West	Straight Ahead	Motor Vehicle In Traffic	Intersection	(UNK)	(UNK)	(UNK)	(UNK)	2
201400227632																			
9/18/2014 7:00 AM	Clear	Dry	0	1	0	0	Pedestrian	Daylight	57.00	Passenger	North	Turning On Red	Pedestrian	On Pavement (Roadway)	(UNK)	(UNK)	(UNK)	(UNK)	1
201400268891																			
10/7/2014 7:40 AM	Clear	Dry	0	1	0	0	Turning	Daylight	57.00	Passenger	East	Turning Left	Motor Vehicle In Traffic	On Pavement (Roadway)	(UNK)	(UNK)	(UNK)	(UNK)	1
										Passenger	West	Avoiding Vehicle/Objects	Motor Vehicle In Traffic	On Pavement (Roadway)	(UNK)	(UNK)	(UNK)	(UNK)	2
201400287319																			
10/20/2014 5:49 PM	Clear	Dry	0	0	0	0	Turning	Dusk	57.00	Other	East	Turning Left	Motor Vehicle In Traffic	On Pavement (Roadway)	(UNK)	(UNK)	(UNK)	(UNK)	1
										Passenger	West	Straight Ahead	Motor Vehicle In Traffic	On Pavement (Roadway)	(UNK)	(UNK)	(UNK)	(UNK)	2

Collision Diagram

1/1/2014 to 12/31/2014

Crash Route: US012 | From MileStation 57 to 57 | County : Cook | Intersection Related: Intersections | *See Notes at End of Report.

Date	Weather	Roadway	----- A	Injuries B	----- C	Killed	Type of Crash	Light Condition	Mile	Vehicle Type	DIRP	Maneuver	Event 1	Loc 1	Event 2	Loc 2	Event 3	Loc 3	Unit
201400273443																			
10/26/2014 5:00 AM	Clear	Dry	0	0	1	0	Rear End	Daylight	57.00	Van/Mini-Van	South	Straight Ahead	Motor Vehicle In Traffic	Intersection	(UNK)	(UNK)	(UNK)	(UNK)	1
										Van/Mini-Van	South	Straight Ahead	Motor Vehicle In Traffic	Intersection	(UNK)	(UNK)	(UNK)	(UNK)	2
201400372223																			
11/18/2014 6:45 PM	Clear	Dry	0	0	0	0	Turning	Darkness/ Lighted Road	57.00	SUV	East	Straight Ahead	Motor Vehicle In Traffic	On Pavement (Roadway)	(UNK)	(UNK)	(UNK)	(UNK)	1
										Passenger	Southwest	Turning Left	Motor Vehicle In Traffic	On Pavement (Roadway)	(UNK)	(UNK)	(UNK)	(UNK)	2

Collision Diagram

1/1/2014 to 12/31/2014

Crash Route: US012 | From MileStation 57 to 57 | County : Cook | Intersection Related: Intersections | *See Notes at End of Report.

TOTAL CRASHES	FATAL CRASHES	A INJURY CRASHES	B INJURY CRASHES	C INJURY CRASHES	PROPERTY DAMAGE CRASHES	TOTAL KILLED	TOTAL INJURED	A INJURIES	B INJURIES	C INJURIES
19	0	0	4	2	13	0	7	0	5	2

Type of Crash	Total	%	Day of Wk	Total	%	Hour of Day	Total	%	Vehicle Type	Total	%
Pedalcyclist	1	5.3%	Monday	4	21.1%	02 AM	1	5.3%	Motorcycle (Over 150cc)	1	2.7%
Pedestrian	1	5.3%	Tuesday	5	26.3%	05 AM	1	5.3%	Other	1	2.7%
Rear End	9	47.4%	Wednesday	4	21.1%	06 AM	2	10.5%	Passenger	27	73.0%
Turning	8	42.1%	Thursday	1	5.3%	07 AM	2	10.5%	Pickup	1	2.7%
TOTAL:	19		Friday	2	10.5%	09 AM	1	5.3%	SUV	3	8.1%
			Sunday	3	15.8%	11 AM	1	5.3%	Van/Mini-Van	4	10.8%
			TOTAL:	19		2 PM	2	10.5%	TOTAL:	37	
						3 PM	1	5.3%			
						4 PM	1	5.3%			
						5 PM	2	10.5%			
						6 PM	3	15.8%			
						8 PM	1	5.3%			
						9 PM	1	5.3%			
						TOTAL:	19				

Weather Cond	Total	%	Light Cond	Total	%	Road Surface	Total	%	DIRP	Total	%
Clear	14	73.7%	Darkness	2	10.5%	Dry	15	78.9%	East	11	29.7%
Cloudy/Overcast	1	5.3%	Darkness/ Lighted Road	2	10.5%	Snow or Slush	2	10.5%	North	7	18.9%
Other	1	5.3%	Dawn	2	10.5%	Unknown	1	5.3%	Northeast	3	8.1%
Rain	1	5.3%	Daylight	12	63.2%	Wet	1	5.3%	South	3	8.1%
						TOTAL:	19		Southwest	1	2.7%

Collision Diagram

1/1/2014 to 12/31/2014

Crash Route: US012 | From MileStation 57 to 57 | County : Cook | Intersection Related: Intersections | *See Notes at End of Report.

<i>Weather Cond</i>	<i>Total</i>	<i>%</i>	<i>Light Cond</i>	<i>Total</i>	<i>%</i>	<i>DIRP</i>	<i>Total</i>	<i>%</i>
Snow	2	10.5%	Dusk	1	5.3%	Unknown	1	2.7%
TOTAL:	19		TOTAL:	19		West	11	29.7%
						TOTAL:	37	



Collision Diagram

1/1/2014 to 12/31/2014

Crash Route: US012 | From MileStation 57 to 57 | County : Cook | Intersection Related: Intersections | *See Notes at End of Report.

Notes

Calendar data selections include data based on the date of the crash. Year selections include data based on the Statistical year in which the crash was processed

Collision Diagram

1/1/2013 to 12/31/2013

Crash Route: US012 | From MileStation 57 to 57 | County : Cook | Intersection Related: Intersections | *See Notes at End of Report.

Date	Weather	Roadway	----- A	Injuries B	----- C	Killed	Type of Crash	Light Condition	Mile	Vehicle Type	DIRP	Maneuver	Event 1	Loc 1	Event 2	Loc 2	Event 3	Loc 3	Unit
201301011506																			
1/4/2013 5:10 PM	Clear	Dry	0	1	0	0	Rear End	Dusk	57.00	Truck Single Unit	North	Slow/Stop In Traffic	Motor Vehicle In Traffic	On Pavement (Roadway)	(UNK)	(UNK)	(UNK)	(UNK)	1
										Passenger	North	Straight Ahead	Motor Vehicle In Traffic	On Pavement (Roadway)	(UNK)	(UNK)	(UNK)	(UNK)	2
201301016468																			
1/14/2013 7:28 PM	Clear	Dry	0	0	0	0	Angle	Darkness/ Lighted Road	57.00	SUV	West	Straight Ahead	Motor Vehicle In Traffic	On Pavement (Roadway)	(UNK)	(UNK)	(UNK)	(UNK)	1
										Passenger	North	Straight Ahead	Motor Vehicle In Traffic	On Pavement (Roadway)	(UNK)	(UNK)	(UNK)	(UNK)	2
201301034352																			
2/8/2013 4:19 PM	Clear	Wet	0	0	0	0	Rear End	Daylight	57.00	Passenger	West	Straight Ahead	Motor Vehicle In Traffic	On Pavement (Roadway)	(UNK)	(UNK)	(UNK)	(UNK)	1
										Passenger	West	Slow/Stop In Traffic	Motor Vehicle In Traffic	On Pavement (Roadway)	(UNK)	(UNK)	(UNK)	(UNK)	2
201301065368																			
3/5/2013 3:50 PM	Clear	Dry	0	0	0	0	Rear End	Daylight	57.00	Passenger	West	Straight Ahead	Motor Vehicle In Traffic	On Pavement (Roadway)	(UNK)	(UNK)	(UNK)	(UNK)	1
										Passenger	West	Slow/Stop In Traffic	Motor Vehicle In Traffic	On Pavement (Roadway)	(UNK)	(UNK)	(UNK)	(UNK)	2
201301066157																			
3/6/2013 7:49 PM	Clear	Dry	0	0	0	0	Turning	Darkness/ Lighted Road	57.00	Passenger	West	Turning Left	Motor Vehicle In Traffic	On Pavement (Roadway)	(UNK)	(UNK)	(UNK)	(UNK)	1
										Passenger	East	Straight Ahead	Motor Vehicle In Traffic	On Pavement (Roadway)	(UNK)	(UNK)	(UNK)	(UNK)	2
201301068917																			
3/14/2013 8:30 AM	Clear	Dry	0	0	1	0	Rear End	Daylight	57.00	Passenger	West	Straight Ahead	Motor Vehicle In Traffic	On Pavement (Roadway)	(UNK)	(UNK)	(UNK)	(UNK)	1

Collision Diagram

1/1/2013 to 12/31/2013

Crash Route: US012 | From MileStation 57 to 57 | County : Cook | Intersection Related: Intersections | *See Notes at End of Report.

Date	Weather	Roadway	A	Injuries B	C	Killed	Type of Crash	Light Condition	Mile	Vehicle Type	DIRP	Maneuver	Event 1	Loc 1	Event 2	Loc 2	Event 3	Loc 3	Unit
										Other	West	Slow/Stop In Traffic	Motor Vehicle In Traffic	On Pavement (Roadway)	(UNK)	(UNK)	(UNK)	(UNK)	2
201301268817																			
7/6/2013 7:30 PM	Clear	Dry	0	0	0	0	Turning	Daylight	57.00										
										Van/Mini-Van	West	Straight Ahead	Motor Vehicle In Traffic	On Pavement (Roadway)	(UNK)	(UNK)	(UNK)	(UNK)	1
										Passenger	Northeast	Turning Left	Motor Vehicle In Traffic	On Pavement (Roadway)	(UNK)	(UNK)	(UNK)	(UNK)	2
201301149948																			
7/28/2013 12:20 PM	Clear	Dry	3	1	0	0	Turning	Daylight	57.00										
										Passenger	East	Turning Left	Motor Vehicle In Traffic	On Pavement (Roadway)	(UNK)	(UNK)	(UNK)	(UNK)	1
										Passenger	West	Straight Ahead	Motor Vehicle In Traffic	On Pavement (Roadway)	(UNK)	(UNK)	(UNK)	(UNK)	2
201301323630																			
8/15/2013 6:00 PM	Clear	Dry	0	0	1	0	Turning	Daylight	57.00										
										Passenger	Southwest	Turning Left	Motor Vehicle In Traffic	Intersection	(UNK)	(UNK)	(UNK)	(UNK)	1
										Passenger	East	Straight Ahead	Motor Vehicle In Traffic	Intersection	(UNK)	(UNK)	(UNK)	(UNK)	2
201301325116																			
8/17/2013 12:26 PM	Clear	Dry	0	0	1	0	Rear End	Daylight	57.00										
										Passenger	West	Straight Ahead	Motor Vehicle In Traffic	Intersection	(UNK)	(UNK)	(UNK)	(UNK)	1
										Passenger	West	Slow/Stop In Traffic	Motor Vehicle In Traffic	On Pavement (Roadway)	(UNK)	(UNK)	(UNK)	(UNK)	2
201301335749																			
8/29/2013 5:18 PM	Clear	Dry	0	0	0	0	Rear End	Daylight	57.00										
										Passenger	South	Straight Ahead	Motor Vehicle In Traffic	On Pavement (Roadway)	(UNK)	(UNK)	(UNK)	(UNK)	1
										Passenger	South	Straight Ahead	Motor Vehicle In Traffic	On Pavement (Roadway)	(UNK)	(UNK)	(UNK)	(UNK)	2
										Passenger	South	Straight Ahead	Motor Vehicle In Traffic	On Pavement (Roadway)	(UNK)	(UNK)	(UNK)	(UNK)	3

Collision Diagram

1/1/2013 to 12/31/2013

Crash Route: US012 | From MileStation 57 to 57 | County : Cook | Intersection Related: Intersections | *See Notes at End of Report.

Date	Weather	Roadway	----- A	Injuries B	----- C	Killed	Type of Crash	Light Condition	Mile	Vehicle Type	DIRP	Maneuver	Event 1	Loc 1	Event 2	Loc 2	Event 3	Loc 3	Unit
201301336089																			
8/30/2013 6:15 PM	Rain	Wet	0	0	0	0	Turning	Daylight	57.00	Passenger	Northeast	Turning Left	Motor Vehicle In Traffic	Intersection	(UNK)	(UNK)	(UNK)	(UNK)	1
										Passenger	West	Straight Ahead	Motor Vehicle In Traffic	Intersection	(UNK)	(UNK)	(UNK)	(UNK)	2
201301322721																			
9/9/2013 8:32 AM	Clear	Dry	0	0	0	0	Rear End	Daylight	57.00	SUV	East	Straight Ahead	Motor Vehicle In Traffic	On Pavement (Roadway)	(UNK)	(UNK)	(UNK)	(UNK)	1
										Van/Mini-Van	East	Slow/Stop - Right Turn	Motor Vehicle In Traffic	On Pavement (Roadway)	(UNK)	(UNK)	(UNK)	(UNK)	2
201301343120																			
9/9/2013 5:32 PM	Clear	Dry	0	0	0	0	Rear End	Daylight	57.00	Passenger	West	Straight Ahead	Motor Vehicle In Traffic	On Pavement (Roadway)	(UNK)	(UNK)	(UNK)	(UNK)	1
										Passenger	West	Slow/Stop In Traffic	Motor Vehicle In Traffic	On Pavement (Roadway)	(UNK)	(UNK)	(UNK)	(UNK)	2
										Passenger	West	Slow/Stop In Traffic	Motor Vehicle In Traffic	On Pavement (Roadway)	(UNK)	(UNK)	(UNK)	(UNK)	3
201301248291																			
10/8/2013 8:47 AM	Clear	Dry	0	0	0	0	Rear End	Daylight	57.00	Tractor With Semi-Trailer	South	Slow/Stop In Traffic	Motor Vehicle In Traffic	On Pavement (Roadway)	(UNK)	(UNK)	(UNK)	(UNK)	1
										Passenger	South	Slow/Stop In Traffic	Motor Vehicle In Traffic	On Pavement (Roadway)	(UNK)	(UNK)	(UNK)	(UNK)	2
201301434519																			
10/29/2013 6:24 AM	Clear	Dry	0	0	0	0	Rear End	Darkness	57.00	Passenger	South	Slow/Stop In Traffic	Motor Vehicle In Traffic	On Pavement (Roadway)	(UNK)	(UNK)	(UNK)	(UNK)	1
										Pickup	South	Slow/Stop In Traffic	Motor Vehicle In Traffic	On Pavement (Roadway)	(UNK)	(UNK)	(UNK)	(UNK)	2

Collision Diagram

1/1/2013 to 12/31/2013

Crash Route: US012 | From MileStation 57 to 57 | County : Cook | Intersection Related: Intersections | *See Notes at End of Report.

Date	Weather	Roadway	----- A	Injuries B	----- C	Killed	Type of Crash	Light Condition	Mile	Vehicle Type	DIRP	Maneuver	Event 1	Loc 1	Event 2	Loc 2	Event 3	Loc 3	Unit
201301437242																			
11/7/2013 7:45 AM	Clear	Dry	0	0	0	0	Rear End	Daylight	57.00	Truck Single Unit	South	Backing	Motor Vehicle In Traffic	On Pavement (Roadway)	(UNK)	(UNK)	(UNK)	(UNK)	1
										Passenger	South	Slow/Stop In Traffic	Motor Vehicle In Traffic	On Pavement (Roadway)	(UNK)	(UNK)	(UNK)	(UNK)	2
201301441955																			
11/23/2013 5:18 PM	Clear	Dry	0	0	0	0	Rear End	Darkness	57.00	Passenger	South	Slow/Stop In Traffic	Motor Vehicle In Traffic	Intersection	(UNK)	(UNK)	(UNK)	(UNK)	1
										SUV	South	Slow/Stop In Traffic	Motor Vehicle In Traffic	Intersection	(UNK)	(UNK)	(UNK)	(UNK)	2
201301444529																			
12/3/2013 5:48 PM	Rain	Wet	0	0	1	0	Rear End	Darkness	57.00	Passenger	East	Straight Ahead	Motor Vehicle In Traffic	Intersection	(UNK)	(UNK)	(UNK)	(UNK)	1
										Passenger	East	Straight Ahead	Motor Vehicle In Traffic	On Pavement (Roadway)	(UNK)	(UNK)	(UNK)	(UNK)	2

Collision Diagram

1/1/2013 to 12/31/2013

Crash Route: US012 | From MileStation 57 to 57 | County : Cook | Intersection Related: Intersections | *See Notes at End of Report.

TOTAL CRASHES	FATAL CRASHES	A INJURY CRASHES	B INJURY CRASHES	C INJURY CRASHES	PROPERTY DAMAGE CRASHES	TOTAL KILLED	TOTAL INJURED	A INJURIES	B INJURIES	C INJURIES
<u>19</u>	<u>0</u>	<u>1</u>	<u>1</u>	<u>4</u>	<u>13</u>	<u>0</u>	<u>9</u>	<u>3</u>	<u>2</u>	<u>4</u>

Type of Crash	Total	%	Day of Wk	Total	%	Hour of Day	Total	%	Vehicle Type	Total	%
Angle	1	5.3%	Monday	3	15.8%	06 AM	1	5.3%	Other	1	2.5%
Rear End	13	68.4%	Tuesday	4	21.1%	07 AM	1	5.3%	Passenger	30	75.0%
Turning	5	26.3%	Wednesday	1	5.3%	08 AM	3	15.8%	Pickup	1	2.5%
TOTAL:	19		Thursday	4	21.1%	Noon	2	10.5%	SUV	3	7.5%
			Friday	3	15.8%	3 PM	1	5.3%	Tractor With Semi-Trailer	1	2.5%
			Saturday	3	15.8%	4 PM	1	5.3%	Truck Single Unit	2	5.0%
			Sunday	1	5.3%	5 PM	5	26.3%	Van/Mini-Van	2	5.0%
			TOTAL:	19		6 PM	2	10.5%	TOTAL:	40	
						7 PM	3	15.8%			
						TOTAL:	19				

Weather Cond	Total	%	Light Cond	Total	%	Road Surface	Total	%	DIRP	Total	%
Clear	17	89.5%	Darkness	3	15.8%	Dry	16	84.2%	East	7	17.5%
Rain	2	10.5%	Darkness/ Lighted Road	2	10.5%	Wet	3	15.8%	North	3	7.5%
TOTAL:	19		Daylight	13	68.4%	TOTAL:	19		Northeast	2	5.0%
			Dusk	1	5.3%				South	11	27.5%
			TOTAL:	19					Southwest	1	2.5%
									West	16	40.0%
									TOTAL:	40	

Collision Diagram

1/1/2013 to 12/31/2013

Crash Route: US012 | From MileStation 57 to 57 | County : Cook | Intersection Related: Intersections | *See Notes at End of Report.

Notes

Current year and previous year data are not yet complete and are subject to change as more information becomes available. Calendar date selections include data based on the date of the crash. Year selections include data based on the statistical year in which the crash was processed.

The intersection-related field could be incorrect and affect the data on the report.

If a crash occurs between two municipalities, it may be coded to another city/county from what is on the crash report.

Crashes with incomplete location information are not included.

Areas where routes have more than one junction have been known to cause problems in determining accurate locations. Please notify us to verify the data for intersections with more than one junction.

For roadway segments which include the intersection of two routes, the intersection report may need to be run on the other route in order to get all the crashes.

Collision Diagram

1/1/2012 to 12/31/2012

Crash Route: US012 | From MileStation 57 to 57 | County : Cook | Intersection Related: Intersections | *See Notes at End of Report.

Date	Weather	Roadway	----- A	Injuries B	----- C	Killed	Type of Crash	Light Condition	Mile	Vehicle Type	DIRP	Maneuver	Event 1	Loc 1	Event 2	Loc 2	Event 3	Loc 3	Unit
201201010726																			
1/2/2012 9:25 AM	Clear	Ice	0	0	0	0	Rear End	Daylight	57.00	Passenger	East	Straight Ahead	Motor Vehicle In Traffic	On Pavement (Roadway)	(UNK)	(UNK)	(UNK)	(UNK)	1
										Passenger	East	Slow/Stop In Traffic	Motor Vehicle In Traffic	On Pavement (Roadway)	(UNK)	(UNK)	(UNK)	(UNK)	2
201201047298																			
1/7/2012 6:10 PM	Clear	Dry	0	0	0	0	Turning	Darkness	57.00	Passenger	North	Turning Right	Motor Vehicle In Traffic	On Pavement (Roadway)	(UNK)	(UNK)	(UNK)	(UNK)	1
										Passenger	North	Straight Ahead	Motor Vehicle In Traffic	On Pavement (Roadway)	(UNK)	(UNK)	(UNK)	(UNK)	2
201201052224																			
3/6/2012 8:59 PM	Clear	Dry	0	0	0	0	Turning	Darkness, Lighted Road	57.00	Passenger	Northeast	Turning On Red	Motor Vehicle In Traffic	Intersection	(UNK)	(UNK)	(UNK)	(UNK)	1
										Passenger	Southeast	Turning Left	Motor Vehicle In Traffic	Intersection	(UNK)	(UNK)	(UNK)	(UNK)	2
201201081793																			
3/30/2012 3:02 PM	Clear	Dry	0	0	0	0	Angle	Daylight	57.00	Passenger	South	Straight Ahead	Motor Vehicle In Traffic	On Pavement (Roadway)	(UNK)	(UNK)	(UNK)	(UNK)	1
										Passenger	West	Straight Ahead	Motor Vehicle In Traffic	On Pavement (Roadway)	(UNK)	(UNK)	(UNK)	(UNK)	2
201201086645																			
4/11/2012 3:20 PM	Clear	Dry	0	0	0	0	Rear End	Daylight	57.00	Passenger	East	Straight Ahead	Motor Vehicle In Traffic	On Pavement (Roadway)	(UNK)	(UNK)	(UNK)	(UNK)	1
										Passenger	East	Starting In Traffic	Motor Vehicle In Traffic	On Pavement (Roadway)	(UNK)	(UNK)	(UNK)	(UNK)	2
										Unknown	Unknown	Unknown	Motor Vehicle In Traffic	On Pavement (Roadway)	(UNK)	(UNK)	(UNK)	(UNK)	3

Collision Diagram

1/1/2012 to 12/31/2012

Crash Route: US012 | From MileStation 57 to 57 | County : Cook | Intersection Related: Intersections | *See Notes at End of Report.

Date	Weather	Roadway	----- A	Injuries B	----- C	Killed	Type of Crash	Light Condition	Mile	Vehicle Type	DIRP	Maneuver	Event 1	Loc 1	Event 2	Loc 2	Event 3	Loc 3	Unit
201201096387																			
4/23/2012 9:25 AM	Clear	Dry	0	0	0	0	Rear End	Daylight	57.00	Tractor Without Semi-Trailer	West	Backing	Motor Vehicle In Traffic	Intersection	(UNK)	(UNK)	(UNK)	(UNK)	1
										Passenger	West	Slow/Stop In Traffic	Motor Vehicle In Traffic	Intersection	(UNK)	(UNK)	(UNK)	(UNK)	2
201201101990																			
4/30/2012 8:07 AM	Rain	Wet	0	0	0	0	Rear End	Daylight	57.00	Passenger	East	Straight Ahead	Motor Vehicle In Traffic	On Pavement (Roadway)	(UNK)	(UNK)	(UNK)	(UNK)	1
										SUV	East	Slow/Stop In Traffic	Motor Vehicle In Traffic	On Pavement (Roadway)	(UNK)	(UNK)	(UNK)	(UNK)	2
201201155196																			
5/19/2012 3:30 PM	Clear	Dry	0	0	0	0	Rear End	Daylight	57.00	Passenger	East	Slow/Stop - Right Turn	Motor Vehicle In Traffic	On Pavement (Roadway)	(UNK)	(UNK)	(UNK)	(UNK)	1
										SUV	East	Slow/Stop - Right Turn	Motor Vehicle In Traffic	On Pavement (Roadway)	(UNK)	(UNK)	(UNK)	(UNK)	2
201201230496																			
7/27/2012 1:45 PM	Clear	Dry	0	0	0	0	Turning	Daylight	57.00	Passenger	West	Straight Ahead	Motor Vehicle In Traffic	On Pavement (Roadway)	(UNK)	(UNK)	(UNK)	(UNK)	1
										Passenger	East	Turning Right	Motor Vehicle In Traffic	On Pavement (Roadway)	(UNK)	(UNK)	(UNK)	(UNK)	2
201201202165																			
7/30/2012 5:00 PM	Clear	Dry	0	0	0	0	Rear End	Daylight	57.00	Passenger	East	Slow/Stop In Traffic	Motor Vehicle In Traffic	On Pavement (Roadway)	(UNK)	(UNK)	(UNK)	(UNK)	1
										Van/Mini-Van	East	Slow/Stop In Traffic	Motor Vehicle In Traffic	On Pavement (Roadway)	(UNK)	(UNK)	(UNK)	(UNK)	2
201201284692																			
9/27/2012 8:59 PM	Clear	Dry	0	0	1	0	Rear End	Darkness, Lighted Road	57.00	Passenger	East	Straight Ahead	Motor Vehicle In Traffic	On Pavement (Roadway)	(UNK)	(UNK)	(UNK)	(UNK)	1

Collision Diagram

1/1/2012 to 12/31/2012

Crash Route: US012 | From MileStation 57 to 57 | County : Cook | Intersection Related: Intersections | *See Notes at End of Report.

Date	Weather	Roadway	----- A	Injuries B	----- C	Killed	Type of Crash	Light Condition	Mile	Vehicle Type	DIRP	Maneuver	Event 1	Loc 1	Event 2	Loc 2	Event 3	Loc 3	Unit
										Passenger	East	Slow/Stop In Traffic	Motor Vehicle In Traffic	On Pavement (Roadway)	(UNK)	(UNK)	(UNK)	(UNK)	2
										Passenger	East	Slow/Stop In Traffic	Motor Vehicle In Traffic	On Pavement (Roadway)	(UNK)	(UNK)	(UNK)	(UNK)	3

201201298655																			
10/17/2012 12:34 PM	Clear	Wet	0	0	0	0	Rear End	Daylight	57.00										
										Van/Mini-Van	East	Straight Ahead	Motor Vehicle In Traffic	On Pavement (Roadway)	(UNK)	(UNK)	(UNK)	(UNK)	1
										Passenger	East	Slow/Stop In Traffic	Motor Vehicle In Traffic	On Pavement (Roadway)	(UNK)	(UNK)	(UNK)	(UNK)	2

201201300919																			
10/22/2012 4:40 PM	Rain	Wet	0	0	0	0	Turning	Daylight	57.00										
										Passenger	East	Turning Left	Motor Vehicle In Traffic	On Pavement (Roadway)	(UNK)	(UNK)	(UNK)	(UNK)	1
										Van/Mini-Van	West	Straight Ahead	Motor Vehicle In Traffic	On Pavement (Roadway)	(UNK)	(UNK)	(UNK)	(UNK)	2

201201302377																			
10/26/2012 3:31 PM	Clear	Dry	0	0	0	0	Rear End	Daylight	57.00										
										Passenger	East	Straight Ahead	Motor Vehicle In Traffic	On Pavement (Roadway)	(UNK)	(UNK)	(UNK)	(UNK)	1
										Passenger	East	Slow/Stop In Traffic	Motor Vehicle In Traffic	On Pavement (Roadway)	(UNK)	(UNK)	(UNK)	(UNK)	2

201201317110																			
11/17/2012 4:46 PM	Clear	Dry	0	0	2	0	Pedalcyclist	Dusk	57.00										
										Passenger	West	Turning Right	Pedalcycl ist	On Pavement (Roadway)	(UNK)	(UNK)	(UNK)	(UNK)	1

201201341709																			
12/27/2012 6:42 PM	Clear	Dry	0	5	0	0	Turning	Darkness, Lighted Road	57.00										
										SUV	West	Turning Left	Motor Vehicle In Traffic	On Pavement (Roadway)	Motor Vehicle In Traffic	Intersecti on	(UNK)	(UNK)	1
										Passenger	East	Straight Ahead	Motor Vehicle In Traffic	On Pavement (Roadway)	Motor Vehicle In Traffic	Intersecti on	(UNK)	(UNK)	2

Collision Diagram

1/1/2012 to 12/31/2012

Crash Route: US012 | From MileStation 57 to 57 | County : Cook | Intersection Related: Intersections | *See Notes at End of Report.

TOTAL CRASHES	FATAL CRASHES	A INJURY CRASHES	B INJURY CRASHES	C INJURY CRASHES	PROPERTY DAMAGE CRASHES	TOTAL KILLED	TOTAL INJURED	A INJURIES	B INJURIES	C INJURIES
16	0	0	1	2	13	0	8	0	5	3

Type of Crash	Total	%	Day of Wk	Total	%	Hour of Day	Total	%	Vehicle Type	Total	%
Angle	1	6.3%	Monday	5	31.3%	08 AM	1	6.3%	Passenger	25	75.8%
Pedalcyclist	1	6.3%	Tuesday	1	6.3%	09 AM	2	12.5%	SUV	3	9.1%
Rear End	9	56.3%	Wednesday	2	12.5%	Noon	1	6.3%	Tractor Without Semi-Trailer	1	3.0%
Turning	5	31.3%	Thursday	2	12.5%	1 PM	1	6.3%	Unknown	1	3.0%
TOTAL:	16		Friday	3	18.8%	3 PM	4	25.0%	Van/Mini-Van	3	9.1%
			Saturday	3	18.8%	4 PM	2	12.5%	TOTAL:	33	
			TOTAL:	16		5 PM	1	6.3%			
						6 PM	2	12.5%			
						8 PM	2	12.5%			
						TOTAL:	16				

Weather Cond	Total	%	Light Cond	Total	%	Road Surface	Total	%	DIRP	Total	%
Clear	14	87.5%	Darkness	1	6.3%	Dry	12	75.0%	East	20	60.6%
Rain	2	12.5%	Darkness, Lighted Road	3	18.8%	Ice	1	6.3%	North	2	6.1%
TOTAL:	16		Daylight	11	68.8%	Wet	3	18.8%	Northeast	1	3.0%
			Dusk	1	6.3%	TOTAL:	16		South	1	3.0%
			TOTAL:	16					Southeast	1	3.0%
									Unknown	1	3.0%
									West	7	21.2%
									TOTAL:	33	

Collision Diagram

1/1/2012 to 12/31/2012

Crash Route: US012 | From MileStation 57 to 57 | County : Cook | Intersection Related: Intersections | *See Notes at End of Report.

Notes

Current year and previous year data are not yet complete and are subject to change as more information becomes available. Calendar date selections include data based on the date of the crash. Year selections include data based on the statistical year in which the crash was processed.

The intersection-related field could be incorrect and affect the data on the report.

If a crash occurs between two municipalities, it may be coded to another city/county from what is on the crash report.

Crashes with incomplete location information are not included.

Areas where routes have more than one junction have been known to cause problems in determining accurate locations. Please notify us to verify the data for intersections with more than one junction.

For roadway segments which include the intersection of two routes, the intersection report may need to be run on the other route in order to get all the crashes.

Collision Diagram

1/1/2011 to 12/31/2011

Crash Route: US012 | From MileStation 57 to 57 | County : Cook | Intersection Related: Intersections | *See Notes at End of Report.

Date	Weather	Roadway	----- A	Injuries B	----- C	Killed	Type of Crash	Light Condition	Mile	Vehicle Type	DIRP	Maneuver	Event 1	Loc 1	Event 2	Loc 2	Event 3	Loc 3	Unit
201101181505																			
6/22/2011 7:04 AM	Clear	Dry	0	0	0	0	Angle	Daylight	57.00	Passenger	South	Straight Ahead	Motor Vehicle in Traffic	Intersection	(UNK)	(UNK)	(UNK)	(UNK)	1
										Passenger	West	Straight Ahead	Motor Vehicle in Traffic	Intersection	(UNK)	(UNK)	(UNK)	(UNK)	2
201101204254																			
7/13/2011 7:30 PM	Clear	Dry	0	0	1	0	Pedestrian	Daylight	57.00	Passenger	West	Turning Left	Pedestrian	Intersection	(UNK)	(UNK)	(UNK)	(UNK)	1
201101268153																			
8/8/2011 6:30 PM	Clear	Dry	0	0	0	0	Turning	Daylight	57.00	Passenger	West	Turning Left	Motor Vehicle in Traffic	Intersection	(UNK)	(UNK)	(UNK)	(UNK)	1
										Passenger	East	Straight Ahead	Motor Vehicle in Traffic	Intersection	(UNK)	(UNK)	(UNK)	(UNK)	2
201101247801																			
8/15/2011 3:40 PM	Clear	Dry	0	0	0	0	Turning	Daylight	57.00	Van/Mini-Van	East	Straight Ahead	Motor Vehicle in Traffic	Intersection	(UNK)	(UNK)	(UNK)	(UNK)	1
										SUV	South	Turning Left	Motor Vehicle in Traffic	Intersection	(UNK)	(UNK)	(UNK)	(UNK)	2
201101247715																			
8/15/2011 4:08 PM	Clear	Dry	0	0	0	0	Rear End	Daylight	57.00	Passenger	West	Straight Ahead	Motor Vehicle in Traffic	Intersection	(UNK)	(UNK)	(UNK)	(UNK)	1
										Passenger	West	Slow/Stop in Traffic	Motor Vehicle in Traffic	On Pavement (Roadway)	(UNK)	(UNK)	(UNK)	(UNK)	2
201101326795																			
10/11/2011 9:00 AM	Clear	Dry	0	0	1	0	Turning	Daylight	57.00	Passenger	North	Turning Left	Motor Vehicle in Traffic	Intersection	(UNK)	(UNK)	(UNK)	(UNK)	1
										Bus up to 15 Passengers	North	Slow/Stop in Traffic	Motor Vehicle in Traffic	Intersection	(UNK)	(UNK)	(UNK)	(UNK)	2

Collision Diagram

1/1/2011 to 12/31/2011

Crash Route: US012 | From MileStation 57 to 57 | County : Cook | Intersection Related: Intersections | *See Notes at End of Report.

Date	Weather	Roadway	----- A	Injuries B	----- C	Killed	Type of Crash	Light Condition	Mile	Vehicle Type	DIRP	Maneuver	Event 1	Loc 1	Event 2	Loc 2	Event 3	Loc 3	Unit
201101370205																			
10/16/2011 2:30 PM	Clear	Dry	0	0	0	0	Angle	Daylight	57.00	SUV	South	Slow/Stop - Left Turn	Motor Vehicle in Traffic	On Pavement (Roadway)	(UNK)	(UNK)	(UNK)	(UNK)	1
										Passenger	East	Straight Ahead	Motor Vehicle in Traffic	On Pavement (Roadway)	(UNK)	(UNK)	(UNK)	(UNK)	2
201101373621																			
11/29/2011 7:30 PM	Clear	Dry	0	0	0	0	Turning	Darkness, Lighted Road	57.00	Passenger	Northeast	Turning Left	Motor Vehicle in Traffic	On Pavement (Roadway)	(UNK)	(UNK)	(UNK)	(UNK)	1
										Passenger	West	Straight Ahead	Motor Vehicle in Traffic	On Pavement (Roadway)	(UNK)	(UNK)	(UNK)	(UNK)	2
201101453944																			
12/5/2011 5:45 PM	Clear	Dry	0	0	0	0	Rear End	Darkness	57.00	Passenger	North	Straight Ahead	Motor Vehicle in Traffic	On Pavement (Roadway)	(UNK)	(UNK)	(UNK)	(UNK)	1
										Passenger	North	Straight Ahead	Motor Vehicle in Traffic	On Pavement (Roadway)	(UNK)	(UNK)	(UNK)	(UNK)	2
201101411179																			
12/31/2011 12:17 AM	Clear	Wet	0	0	0	0	Rear End	Dusk	57.00	Passenger	South	Straight Ahead	Motor Vehicle in Traffic	On Pavement (Roadway)	Traffic Signal	Intersecti on	(UNK)	(UNK)	1
										Van/Mini-Van	South	Starting in Traffic	Motor Vehicle in Traffic	On Pavement (Roadway)	(UNK)	(UNK)	(UNK)	(UNK)	2

Collision Diagram

1/1/2011 to 12/31/2011

Crash Route: US012 | From MileStation 57 to 57 | County : Cook | Intersection Related: Intersections | *See Notes at End of Report.

TOTAL CRASHES	FATAL CRASHES	A INJURY CRASHES	B INJURY CRASHES	C INJURY CRASHES	PROPERTY DAMAGE CRASHES	TOTAL KILLED	TOTAL INJURED	A INJURIES	B INJURIES	C INJURIES
10	0	0	0	2	8	0	2	0	0	2

Type of Crash	Total	%	Day of Wk	Total	%	Hour of Day	Total	%	Vehicle Type	Total	%
Angle	2	20.0%	Monday	4	40.0%	Midnight	1	10.0%	Bus up to 15 Passengers	1	5.3%
Pedestrian	1	10.0%	Tuesday	2	20.0%	07 AM	1	10.0%	Passenger	14	73.7%
Rear End	3	30.0%	Wednesday	2	20.0%	09 AM	1	10.0%	SUV	2	10.5%
Turning	4	40.0%	Saturday	1	10.0%	2 PM	1	10.0%	Van/Mini-Van	2	10.5%
TOTAL:	10		Sunday	1	10.0%	3 PM	1	10.0%	TOTAL:	19	
			TOTAL:	10		4 PM	1	10.0%			
						5 PM	1	10.0%			
						6 PM	1	10.0%			
						7 PM	2	20.0%			
						TOTAL:	10				

Weather Cond	Total	%	Light Cond	Total	%	Road Surface	Total	%	DIRP	Total	%
Clear	10	100.0%	Darkness	1	10.0%	Dry	9	90.0%	East	3	15.8%
TOTAL:	10		Darkness, Lighted Road	1	10.0%	Wet	1	10.0%	North	4	21.1%
			Daylight	7	70.0%	TOTAL:	10		Northeast	1	5.3%
			Dusk	1	10.0%				South	5	26.3%
			TOTAL:	10					West	6	31.6%
									TOTAL:	19	



Collision Diagram

1/1/2011 to 12/31/2011

Crash Route: US012 | From MileStation 57 to 57 | County : Cook | Intersection Related: Intersections | *See Notes at End of Report.

Notes

Current year and previous year data are not yet complete and are subject to change as more information becomes available. Calendar date selections include data based on the date of the crash. Year selections include data based on the statistical year in which the crash was processed.

The intersection-related field could be incorrect and affect the data on the report.

If a crash occurs between two municipalities, it may be coded to another city/county from what is on the crash report.

Crashes with incomplete location information are not included.

Areas where routes have more than one junction have been known to cause problems in determining accurate locations. Please notify us to verify the data for intersections with more than one junction.

For roadway segments which include the intersection of two routes, the intersection report may need to be run on the other route in order to get all the crashes.

Collision Diagram

1/1/2010 to 12/31/2010

Crash Route: US012 | From MileStation 57 to 57 | County : Cook | Intersection Related: Intersections | *See Notes at End of Report.

Date	Weather	Roadway	----- A	Injuries B	----- C	Killed	Type of Crash	Light Condition	Mile	Vehicle Type	DIRP	Maneuver	Event 1	Loc 1	Event 2	Loc 2	Event 3	Loc 3	Unit
201001014255																			
1/11/2010 5:00 PM	Clear	Dry	0	0	0	0	Turning	Dusk	57.00	Passenger	West	Slow/Stop - Left Turn	Motor Vehicle in Traffic	On Pavement (Roadway)	(UNK)	(UNK)	(UNK)	(UNK)	1
										Passenger	West	Turning Left	Motor Vehicle in Traffic	On Pavement (Roadway)	(UNK)	(UNK)	(UNK)	(UNK)	2
201001062106																			
3/26/2010 6:00 AM	Clear	Dry	0	0	0	0	Turning	Daylight	57.00	Pickup	South	Unknown	Motor Vehicle in Traffic	On Pavement (Roadway)	(UNK)	(UNK)	(UNK)	(UNK)	1
										Tractor with Semi-Trailer	South	Turning Left	Motor Vehicle in Traffic	On Pavement (Roadway)	(UNK)	(UNK)	(UNK)	(UNK)	2
201001108281																			
5/5/2010 1:30 PM	Clear	Dry	0	1	0	0	Rear End	Daylight	57.00	Van/Mini-Van	West	Straight Ahead	Motor Vehicle in Traffic	On Pavement (Roadway)	(UNK)	(UNK)	(UNK)	(UNK)	1
										Passenger	West	Straight Ahead	Motor Vehicle in Traffic	On Pavement (Roadway)	(UNK)	(UNK)	(UNK)	(UNK)	2
201001209844																			
6/7/2010 9:30 AM	Clear	Dry	0	1	0	0	Pedalcyclist	Daylight	57.00	Passenger	North	Turning Right	Pedalcyclist	On Pavement (Roadway)	(UNK)	(UNK)	(UNK)	(UNK)	1
201001162182																			
6/10/2010 11:50 AM	Clear	Dry	0	0	0	0	Turning	Daylight	57.00	Passenger	Southwest	Turning Left	Motor Vehicle in Traffic	On Pavement (Roadway)	(UNK)	(UNK)	(UNK)	(UNK)	1
										SUV	East	Straight Ahead	Motor Vehicle in Traffic	On Pavement (Roadway)	(UNK)	(UNK)	(UNK)	(UNK)	2
201001212067																			
6/18/2010 11:26 AM	Clear	Dry	0	0	0	0	Rear End	Daylight	57.00	Passenger	North	Straight Ahead	Motor Vehicle in Traffic	On Pavement (Roadway)	(UNK)	(UNK)	(UNK)	(UNK)	1

Collision Diagram

1/1/2010 to 12/31/2010

Crash Route: US012 | From MileStation 57 to 57 | County : Cook | Intersection Related: Intersections | *See Notes at End of Report.

Date	Weather	Roadway	----- A	Injuries B	----- C	Killed	Type of Crash	Light Condition	Mile	Vehicle Type	DIRP	Maneuver	Event 1	Loc 1	Event 2	Loc 2	Event 3	Loc 3	Unit
										SUV	North	Slow/Stop in Traffic	Motor Vehicle in Traffic	On Pavement (Roadway)	(UNK)	(UNK)	(UNK)	(UNK)	2
201001216142																			
6/22/2010 2:50 PM	Clear	Dry	0	0	0	0	Sideswipe Same Direction	Daylight	57.00										
										Tractor with Semi-Trailer	North	Straight Ahead	Motor Vehicle in Traffic	On Pavement (Roadway)	(UNK)	(UNK)	(UNK)	(UNK)	1
										Pickup	North	Slow/Stop in Traffic	Motor Vehicle in Traffic	On Pavement (Roadway)	(UNK)	(UNK)	(UNK)	(UNK)	2
										Passenger	North	Slow/Stop in Traffic	Motor Vehicle in Traffic	On Pavement (Roadway)	(UNK)	(UNK)	(UNK)	(UNK)	3
201001205550																			
7/17/2010 5:20 PM	Clear	Dry	0	1	0	0	Turning	Daylight	57.00										
										Passenger	East	Straight Ahead	Motor Vehicle in Traffic	Intersection	(UNK)	(UNK)	(UNK)	(UNK)	1
										Passenger	West	Turning Left	Motor Vehicle in Traffic	Intersection	(UNK)	(UNK)	(UNK)	(UNK)	2
201001222140																			
7/26/2010 10:55 AM	Clear	Wet	0	0	0	0	Rear End	Daylight	57.00										
										Passenger	East	Straight Ahead	Motor Vehicle in Traffic	On Pavement (Roadway)	(UNK)	(UNK)	(UNK)	(UNK)	1
										Passenger	East	Slow/Stop in Traffic	Motor Vehicle in Traffic	On Pavement (Roadway)	(UNK)	(UNK)	(UNK)	(UNK)	2
201001265286																			
9/2/2010 3:51 PM	Clear	Dry	0	0	0	0	Rear End	Daylight	57.00										
										Passenger	West	Straight Ahead	Motor Vehicle in Traffic	On Pavement (Roadway)	(UNK)	(UNK)	(UNK)	(UNK)	1
										SUV	West	Slow/Stop in Traffic	Motor Vehicle in Traffic	On Pavement (Roadway)	(UNK)	(UNK)	(UNK)	(UNK)	2
201001411097																			
12/20/2010 6:24 PM	Snow	Snow or Slush	0	0	0	0	Rear End	Darkness	57.00										
										Passenger	South	Straight Ahead	Motor Vehicle in Traffic	On Pavement (Roadway)	(UNK)	(UNK)	(UNK)	(UNK)	1



Collision Diagram

1/1/2010 to 12/31/2010

Crash Route: US012 | From MileStation 57 to 57 | County : Cook | Intersection Related: Intersections | *See Notes at End of Report.

Date	Weather	Roadway	----- A	Injuries B	----- C	Killed	Type of Crash	Light Condition	Mile	Vehicle Type	DIRP	Maneuver	Event 1	Loc 1	Event 2	Loc 2	Event 3	Loc 3	Unit
										SUV	Unknown	Slow/Stop - Right Turn	Motor Vehicle in Traffic	On Pavement (Roadway)	(UNK)	(UNK)	(UNK)	(UNK)	2

Collision Diagram

1/1/2010 to 12/31/2010

Crash Route: US012 | From MileStation 57 to 57 | County : Cook | Intersection Related: Intersections | *See Notes at End of Report.

TOTAL CRASHES	FATAL CRASHES	A INJURY CRASHES	B INJURY CRASHES	C INJURY CRASHES	PROPERTY DAMAGE CRASHES	TOTAL KILLED	TOTAL INJURED	A INJURIES	B INJURIES	C INJURIES
11	0	0	3	0	8	0	3	0	3	0

Type of Crash	Total	%	Day of Wk	Total	%	Hour of Day	Total	%	Vehicle Type	Total	%
Pedalcyclist	1	9.1%	Monday	4	36.4%	06 AM	1	9.1%	Passenger	13	59.1%
Rear End	5	45.5%	Tuesday	1	9.1%	09 AM	1	9.1%	Pickup	2	9.1%
Sideswipe Same Direction	1	9.1%	Wednesday	1	9.1%	10 AM	1	9.1%	SUV	4	18.2%
Turning	4	36.4%	Thursday	2	18.2%	11 AM	2	18.2%	Tractor with Semi-Trailer	2	9.1%
TOTAL:	11		Friday	2	18.2%	1 PM	1	9.1%	Van/Mini-Van	1	4.5%
			Saturday	1	9.1%	2 PM	1	9.1%	TOTAL:	22	
			TOTAL:	11		3 PM	1	9.1%			
						5 PM	2	18.2%			
						6 PM	1	9.1%			
						TOTAL:	11				
Weather Cond	Total	%	Light Cond	Total	%	Road Surface	Total	%	DIRP	Total	%
Clear	10	90.9%	Darkness	1	9.1%	Dry	9	81.8%	East	4	18.2%
Snow	1	9.1%	Daylight	9	81.8%	Snow or Slush	1	9.1%	North	6	27.3%
TOTAL:	11		Dusk	1	9.1%	Wet	1	9.1%	South	3	13.6%
			TOTAL:	11		TOTAL:	11		Southwest	1	4.5%
									Unknown	1	4.5%
									West	7	31.8%
									TOTAL:	22	



Collision Diagram

1/1/2010 to 12/31/2010

Crash Route: US012 | From MileStation 57 to 57 | County : Cook | Intersection Related: Intersections | *See Notes at End of Report.

Notes

Current year and previous year data are not yet complete and are subject to change as more information becomes available. Calendar date selections include data based on the date of the crash. Year selections include data based on the statistical year in which the crash was processed.

The intersection-related field could be incorrect and affect the data on the report.

If a crash occurs between two municipalities, it may be coded to another city/county from what is on the crash report.

Crashes with incomplete location information are not included.

Areas where routes have more than one junction have been known to cause problems in determining accurate locations. Please notify us to verify the data for intersections with more than one junction.

For roadway segments which include the intersection of two routes, the intersection report may need to be run on the other route in order to get all the crashes.

Traffic Volume

Cermak Rd and Mannheim Rd ADT December 2009/2010

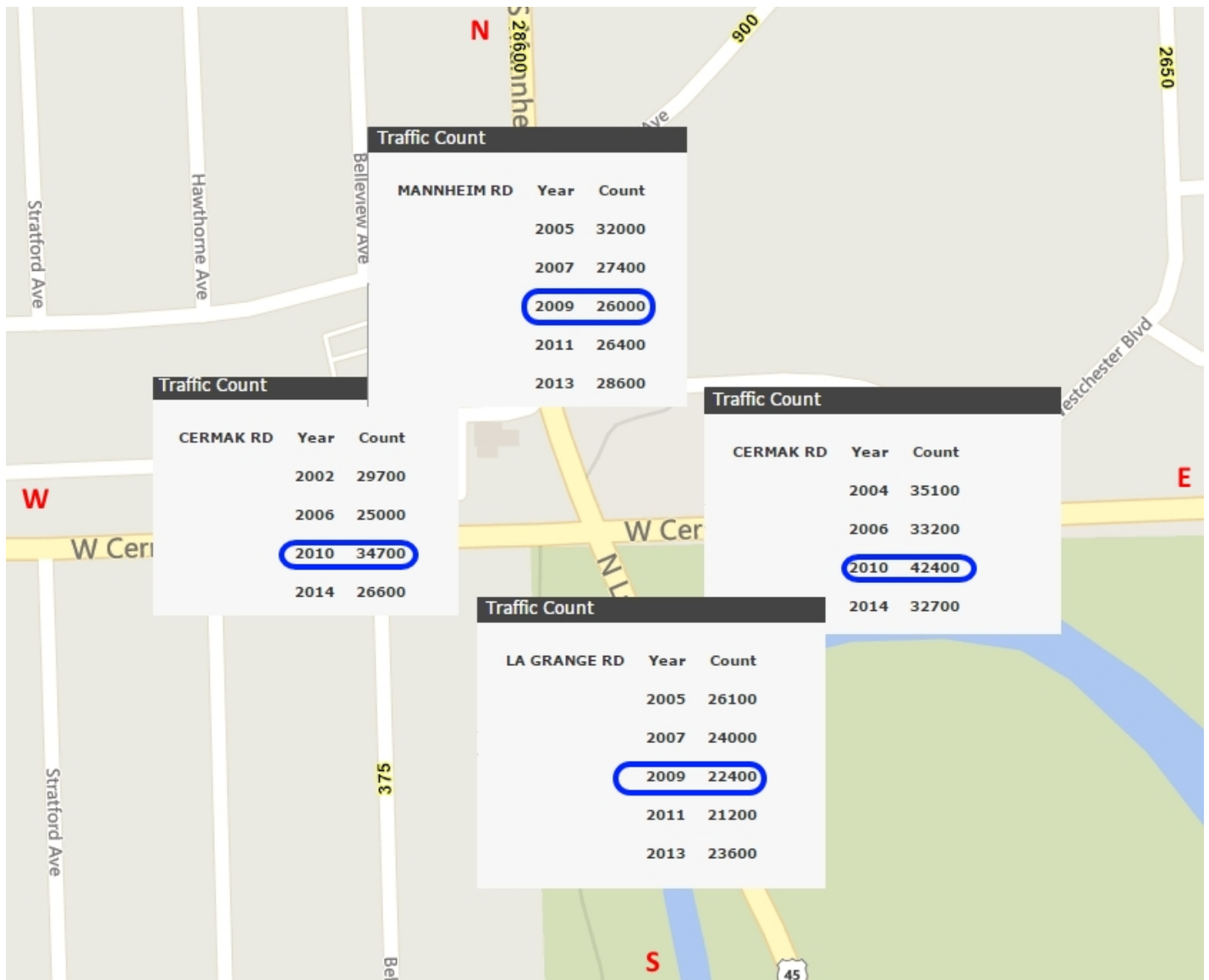
The traffic numbers below were obtained from the IDOT website per the RLR Guideline document published by IDOT. Only ADT values were available, peak numbers were not provided.

Mannheim Rd ADT

- North: 26,000
- South: 22,400

Cermak Rd ADT

- East: 42,400
- West: 34,700



Cermak Rd and Mannheim Rd ADT December 2013/2014

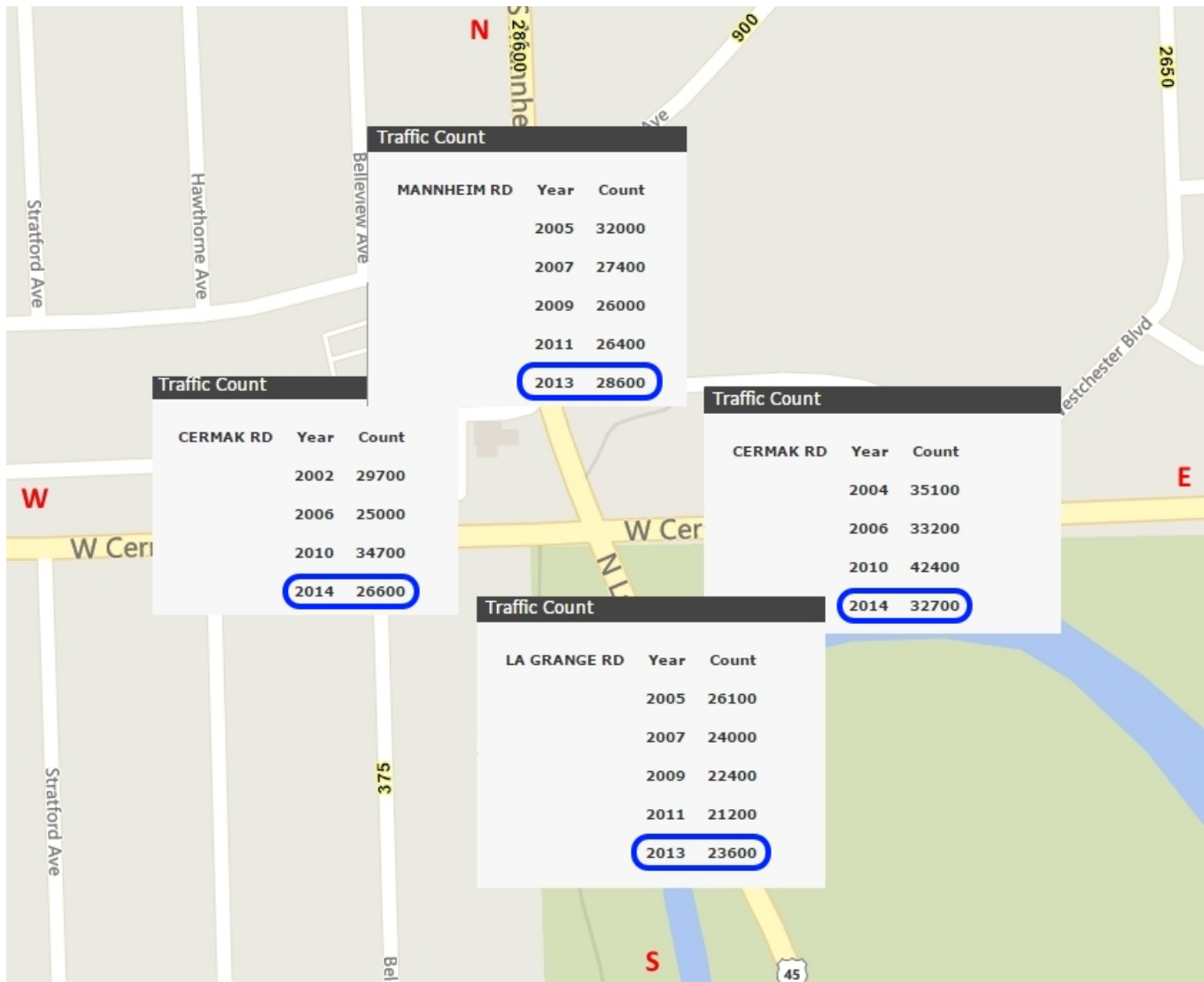
The traffic numbers below were obtained from the IDOT website per the RLR Guideline document published by IDOT. Only ADT values were available, peak numbers were not provided.

Mannheim Rd ADT

- North: 28,600
- South: 23,600

Cermak Rd ADT

- East: 32,700
- West: 26,600



Summary

After analyzing all of the available data, we believe that the new RLR camera located at the southbound approach of Cermak Rd and Mannheim Rd is fulfilling a traffic safety need in the **Village of Westchester**. A SafeSpeed camera was installed at this location on 11/09/2013. In the year following the installation (2014) the rate of **Angle** crashes at this intersection, steady for the previous 3 years, was reduced to 0. With continued oversight and timely maintenance by the **Village of Westchester** and SafeSpeed, we expect this measure of traffic safety to continue. This intersection will be reevaluated in three years' time, per IDOT guidelines.

Crashes that are most likely to result in bodily injury are those where one vehicle strikes one or more vehicles in motion at a 90 degree angle. A crash of this kind is commonly referred to as a "T-Bone," or **Angle** crash. The damage sustained by vehicles involved in these types of crashes is typically more severe than that sustained from **Rear End** crashes. Studies have shown that installing RLR cameras at problem intersections helps to lessen the chance of one of these crashes occurring.

The intersection of Cermak Rd and Mannheim Rd was selected specifically for this program because of its high traffic volume and crash rate. All processes are in compliance with the RLR regulations laid out by the Illinois Department of Transportation District 1 Bureau of Traffic Operations.